

# ANTI-RACIST RESOURCE GUIDE EDUCATION

Black Girls Matter: Pushed Out, Overpoliced, and Underprotected. Crenshaw. Against the backdrop of the surveillance, punishment, and criminalization of youth of color in the United States, *Black Girls Matter: Pushed Out, Overpoliced, and Underprotected* seeks to increase awareness of the gendered consequences of disciplinary and push-out policies for girls of color, and, in particular, Black girls.

## EdBuild

Ten of the twelve million students enrolled in racially concentrated nonwhite districts reside in states where the funding policies bias white districts. A \$23billion funding gap exists between majority-white and majority-POC school districts.

## White Math Teachers Treat Students Differently in Predominantly Black Schools. Battey.

White math teachers in predominantly black middle schools are more likely to respond negatively to students' behavioral or academic issues - and this may have long-term negative consequences for student performance, according to a new study that highlights the need to recruit more black teachers.

## The Power of Teacher Expectations. Gershenson, Papageorge.

Could differences in teachers' expectations of white students and black students help to explain gaps in key outcomes such as college enrollment and completion?

## Uneven Playing Field? Assessing the Teacher Quality Gap between Advantaged and Disadvantaged Students. Goldhaber, Lavery, Theobald.

Policymakers aiming to close the well-documented achievement gap between advantaged and disadvantaged students have increasingly turned their attention to issues of teacher quality.

## Students of Color Remain Underrepresented in College Prep Classes.

California School Board Association.

Studies suggest that students who take college-level courses — whether AP, dual-enrollment or International Baccalaureate programs — in high school are more likely to graduate, attend college and earn a degree. Black and Latinx students continue to be underrepresented in college credit-bearing classes — even when they attend schools that offer an array of AP course options.

## Discretion and Disproportionality : Explaining the Underrepresentation of High-Achieving Students of Color in Gifted Programs. Grissom, Redding.

Students of color are underrepresented in gifted programs relative to White students, but the reasons for this underrepresentation are poorly understood. We document that even among students with high standardized test scores, Black students are less likely to be assigned to gifted services in both math and reading, a pattern that persists when controlling for other background factors, such as health, and SES.



Victoria Lynn Alexander, MEd.  
[Twitter](#) | [Instagram](#) | [Facebook](#)

The Anti-Racist Resource Guide was created for anyone looking to broaden their understanding of anti-racism and get involved to combat racism, specifically as it relates to anti-Blackness and police violence. Within this guide, please find a variety of resources to explore practical ways to understand, explain, and solve seemingly intractable problems of racial inequity, white supremacy, police violence, & systemic injustice.

This document is a free resource but does require a great deal of labor to create and update. Should you wish to compensate this document's contributor, Victoria Alexander, please find her on Venmo at victoriaalxndr, and on CashApp at \$victoriaalxndr. Please share widely to your friends, family, students, & colleagues. Thank you for leaning into this work.



# ANTI-RACIST RESOURCE GUIDE EDUCATION

## TEACHER : STUDENT REPRESENTATION

51% of all public school students in the U.S. were students of color in 2017-18.

80% of all public school teachers in the U.S. were white in 2017-18.

Students of color who have at least one teacher of color may do better on tests and be less likely to have disciplinary issues.

*National Center for  
Education Statistics*



## GIFTED & HONORS TRACKING

Black and Latinx students are regularly excluded from gifted, talented, or advanced tracks, creating modern-day segregation *within* schools.

Black students constitute 16.7% of the student population but just 9.8% of students in gifted & honors programs. Latinx students constitute 22.3% of students but only 15.4% of gifted & honors programs.

*US Department of  
Education Civil Rights  
Data Collection*



## TEACHER QUALITY

Black, Latinx, & Native American youth are most likely to have teachers with the least amount of experience, the worst licensure exam scores, & the poorest record of improving student test scores (Black 7th graders are 54% more likely to have a novice teacher in math and 38% more likely to have a novice teacher in English than White students).

*Uneven Playing Field?  
Assessing the Teacher Quality  
Gap Between Advantaged and  
Disadvantaged Students.  
Goldhaber, Lavery, & Theobald.*



Victoria Lynn Alexander, MEd.  
[Twitter](#) | [Instagram](#) | [Facebook](#)

The Anti-Racist Resource Guide was created for anyone looking to broaden their understanding of anti-racism and get involved to combat racism, specifically as it relates to anti-Blackness and police violence. Within this guide, please find a variety of resources to explore practical ways to understand, explain, and solve seemingly intractable problems of racial inequity, white supremacy, police violence, & systemic injustice.

This document is a free resource but does require a great deal of labor to create and update. Should you wish to compensate this document's contributor, Victoria Alexander, please find her on Venmo at victoriaalxndr, and on CashApp at \$victoriaalxndr. Please share widely to your friends, family, students, & colleagues. Thank you for leaning into this work.



# ANTI-RACIST RESOURCE GUIDE EDUCATION

## COLLEGIATE DEMOGRAPHICS

Black students are just 6% of college students at elite schools but 15% of college-age Americans.

In regard to income/wealth at elite institutions, more students come from the top 1% of the income scale than from the entire bottom 60%.

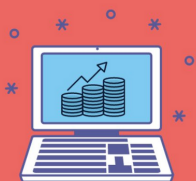
*National Center for  
Education Statistics*



## SCHOOL FUNDING

On average, predominantly white school districts receive \$23 billion more in funding than school districts that primarily serve students of color and those from low-income families, largely due to public education funding structures' reliance on property taxes influenced by resident's wealth.

*EdBuild - School Funding  
Systems in America Report*

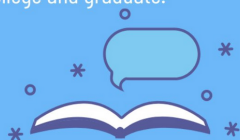


## COLLEGE PREP

Only 57% of Black students have access to a full range of courses necessary for college readiness, compared to 81% percent of Asian American students and 71% percent of white students.

Students who take college readiness courses like AP, dual-enrollment, or International Baccalaureate programs — in high school are more likely to attend college and graduate.

*National Center for  
Education Statistics*



Victoria Lynn Alexander, MEd.  
[Twitter](#) | [Instagram](#) | [Facebook](#)

The Anti-Racist Resource Guide was created for anyone looking to broaden their understanding of anti-racism and get involved to combat racism, specifically as it relates to anti-Blackness and police violence. Within this guide, please find a variety of resources to explore practical ways to understand, explain, and solve seemingly intractable problems of racial inequity, white supremacy, police violence, & systemic injustice.

This document is a free resource but does require a great deal of labor to create and update. Should you wish to compensate this document's contributor, Victoria Alexander, please find her on Venmo at victoriaalxndr, and on CashApp at \$victoriaalxndr. Please share widely to your friends, family, students, & colleagues. Thank you for leaning into this work.





# ANTI-RACIST RESOURCE GUIDE EDUCATION

## SCHOOL DISCIPLINE

Nationally, Black girls were suspended six times more than white girls for the same behavior.

Nationally, Black boys were suspended three times as often as white boys for the same behavior.

The criminalization of Black people begins in our children's schools and permeates various systems.

*US Department of  
Education Civil Rights  
Data Collection*



## TEACHER ATTITUDES & EXPECTATIONS

A 2019 Rutgers study found that White teachers were three times more negative with Black students than with white students, and held lower expectations for Black students, showing that critical phases of development for Black children could be hindered through daily interactions with biased teachers.

*Battey, Rutgers Graduate  
School of Education.  
Published by Harvard  
Educational Review.*



**"Overwhelmingly students of color—arrive on elite-college campuses and are perpetually made to feel as if they don't deserve to be there, whether it's stocking up on nonperishable food, or overhearing an offhand comment about how their acceptance was predicated on the color of their skin.**

**Meanwhile, many wealthy students for all intents and purposes have their parents buy their way into these schools through private-school tuition, test prep, donations to colleges, and myriad other advantages. And they rarely experience the same level of skepticism as to whether they have 'earned' their place."**

*Dr. Clint Smith III*



Victoria Lynn Alexander, MEd.  
[Twitter](#) | [Instagram](#) | [Facebook](#)

The Anti-Racist Resource Guide was created for anyone looking to broaden their understanding of anti-racism and get involved to combat racism, specifically as it relates to anti-Blackness and police violence. Within this guide, please find a variety of resources to explore practical ways to understand, explain, and solve seemingly intractable problems of racial inequity, white supremacy, police violence, & systemic injustice.

This document is a free resource but does require a great deal of labor to create and update. Should you wish to compensate this document's contributor, Victoria Alexander, please find her on Venmo at victoriaalxndr, and on CashApp at \$victoriaalxndr. Please share widely to your friends, family, students, & colleagues. Thank you for leaning into this work.

